



Salon de Ning Lounge at Peninsula Hong Kong

Gains Efficiency with Crestron

A historical five-star luxury hotel, The Peninsula Hong Kong has long been hailed as one of the finest hotels in the world. It is located in the heart of Kowloon district – Tsim Sha Tsui, overlooking the Victoria Harbour and Hong Kong Island. To start the legendary "Grande Dame of the Far East" in 1928, the hotel continues to offer a blend of the best of Eastern and Western hospitality in an atmosphere of unmatched classical grandeur and timeless elegance.

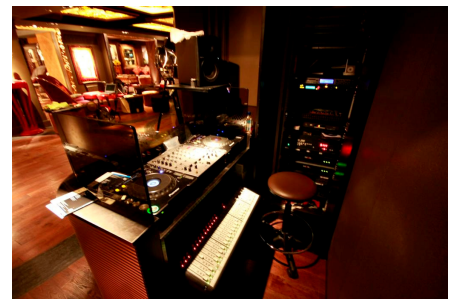


Opened in December 2008, Salon de Ning is located in the basement of the hotel, where the chic bar and lounge includes a small dance floor with live music, together with a section of private seating alcoves. Crestron has been chosen to control the lighting and audiovisual system in this glamorous lounge.



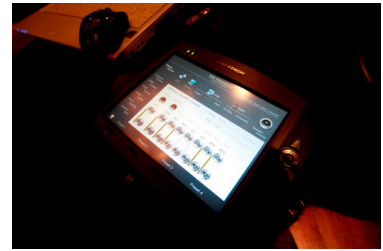
Salon de Ning is a seamless combination of a clubby lounge and bar venue with a unique collection of travel mementos and art. It is filled with Chinese and international culture, reflecting the glamour and style of 1930's Shanghai – the "Paris of the East"

Crestron control system integrates all the AV and lighting systems throughout the lounge, providing easy operation for the users. A Crestron CP2E processor is installed to control all of the AV gears; including a DVD player, CD players, a projector, a 84"x84" screen, amplifiers, switchers and a digital sound processor; and the lighting system. Isys 3.6" TPS-4L wall mount touchpanels installed in the DJ booth and service station, which are used for routing video and audio signals, calling different audio presets and lighting scenes.

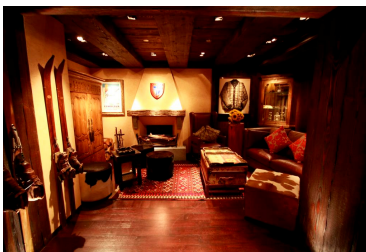




Automation powered by Crestron system simplifies and streamlines the operation. With a single touch on the touchpanel, the screen opens, the AV components turn on, the inputs are selected and the volume is set. For the private room, local volume and lighting scene can be adjustable via a Designer keypad CNX-B12. Isys 8.4" TPMC-8X WiFi touchpanel provides wireless remote control over the whole system of the lounge.



During day-time and intermezzo time, the lounge plays background music. iPod with Crestron ipod docking CENI-IDOC is used as background music source. This professional standard music sever can be fully connected with Crestron control system and the music can be centrally administrated. By a single touch on the touchpanel, the music would discretely cross-fade from the original to the new channel.



The lighting system, including a CLI-220N-4 dimmer module is tied into the CP2E processor, in support of 12 circuits of light at the stage. Various lighting presets create the right ambiance for live band, party and dancing. The lights could also be dimmed for fine adjustment through the touchpanels.



Salon de Ning lounge are well equipped with many audiovisual facilities and the whole system is sophisticated. Therefore, one of the project requirements should be ease operation for the staff. With Crestron control system, that is not a problem because it is so easy to use.